



## Arctic Cat

650 & 700H1 EFI: **Thundercat 1000** : **MudPro 700 & 1000**

Installation: Slip On System



### Please Read Carefully

Read all instructions before installation. Make sure the vehicle and exhaust system are completely cool & on level ground before installation. You should have some mechanical knowledge and a basic set of tools. (A lift, center or rear stand will help.) We advise that this installation be done by a qualified technician. If this is a street vehicle, you may need to modify or replace your stock license plate bracket and turn signals. Please consult your local dealer. Check your local laws to make sure you are in compliance. HMF is not responsible if you are not.

### Stock Exhaust Removal

1. Make sure the machine is on level ground and completely cooled down.
2. Remove the Stock Silencer and Springs. You may use a Spring Puller or a long piece of wire to do this. (You may need to loosen the pipe at the head to allow for easier removal/installation.)
3. Pull back and twist until the Silencer is removed.

### HMF Slip On Installation

1. Ensuring that the **Stock Gasket** is still present, slide the **HMF Silencer** onto the **Head Pipe**. *Some pushing and twisting may be necessary. (See Figure 1)*
2. Using a **Spring Tool** or long piece of wire, replace the **Stock Springs**. *(Figure 2 & 3)*
3. Using the supplied nuts, bolts, and washers, mount the **HMF Silencer** to the **"Right Side" Upper Hanger** and the **Lower Hanger**. *(Figure 4)*

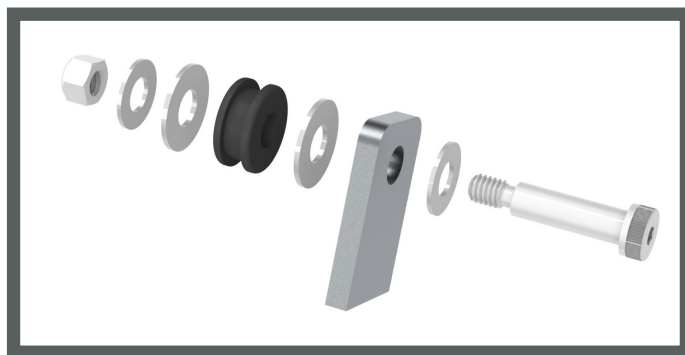


Figure 4: Performance Series Only: Swamp Series uses OE style hangers.



Figure 1



Figure 2

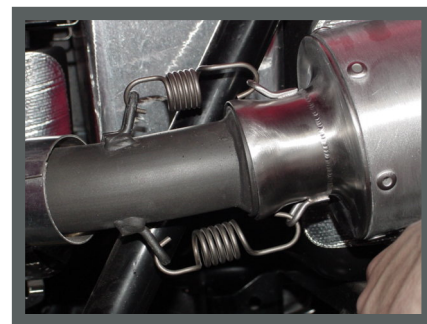


Figure 3

### Recommended Slip On Tuning Settings:

**650H1 - 700H1:** 135 Keihin Round: 45 Pilot Jet

These settings are to be used as a starting point and were determined on our dyno at 900ft - 60°F. The final tuning is up to the customer. For more information about tuning, visit [www.HMFracing.com](http://www.HMFracing.com).

**Thundercat 1000 & Mudpro:** No Optimizer Needed

### Warranty Information

All HMF exhaust systems are covered by a limited warranty described on the enclosed warranty card. Mapping/Jetting and installation are the responsibility of the customer. HMF Performance exhausts are designed for closed-course competition use only.

### Having trouble? We can help.

If you're still having trouble with your installation, visit [www.HMFracing.com](http://www.HMFracing.com) and contact us by e-mail, Forums, or by calling 866.HMF.PIPE



This exhaust, EFI Controller, air filter, jet kit is not intended for use/sale in California and does not meet California, Federal, EPA, CARB noise or emission standards for on road/highway, public, private or state land and is prohibited for use by Federal law. This exhaust, EFI Controller, air filter, jet kit is intended for use in "closed course competition off road racing use only" on machines which do not fall under the California, Federal, EPA, CARB noise or emission standards. Modifications which exceed California, Federal, EPA, CARB noise or emission standards on non "Closed course competition off road racing use only" vehicles is prohibited by Federal law.

FOOTNOTE: 2006 and newer motorcycles with head/tail lights OEM from the manufacturer and every all terrain vehicle, even those intended for off road closed course competition use, are considered California, Federal, EPA CARB noise or emission controlled vehicles. Vehicle emission control information is noted in the owners manual and on the machine air box lid and exhaust muffler. Any modifications which exceed the California, Federal, EPA, and CARB noise or emission standard is prohibited by Federal LAW.