

Polaris Sportsman 400 & 500

Installation: Slip On System



Please Read Carefully

Read all instructions before installation. Make sure the vehicle and exhaust system are completely cool & on level ground before installation. You should have some mechanical knowledge and a basic set of tools. (A lift, center or rear stand will help.) We advise that this installation be done by a qualified technician. If this is a street vehicle, you may need to modify or replace your stock license plate bracket and turn signals. Please consult your local dealer. Check your local laws to make sure you are in compliance. HMF is not responsible if you are not.

Stock Slip On Removal

1. Remove the **Nuts, Carriage Bolts** and **Grommets** from the **Stock Silencer**.
2. Using a Spring Puller or a Long Piece of Electrical Wire (recommended), remove (2) **Springs** holding the **Silencer** to the **Head Pipe**. Remove the **Silencer**.
3. Remove the **Silencer Bracket Bolts** and **Bracket**.
4. Remove the **Left-Rear-Sub-Frame-Bolt**.

HMF Slip On Installation

1. Check the original gasket for wear or damage. Replace if necessary.
2. Position the **HMF Slip On** so the **Mounting Brackets** line up with the **Rear-Most-Sub-Frame-Bolt-Holes**, and the **Inlet** lines up with the **Head Pipe**. (See Fig. 1)
3. Use the original bolts to mount the **Silencer** to the **Sub-Frame**.
4. Using a spring puller or a long piece of electrical wire (recommended), install the (2) **Supplied Springs** at the **Inlet-to-Head-Pipe-Joint**.
5. Inspect all areas around the exhaust for proper clearance with hoses, plastics, etc. Adjust as necessary.

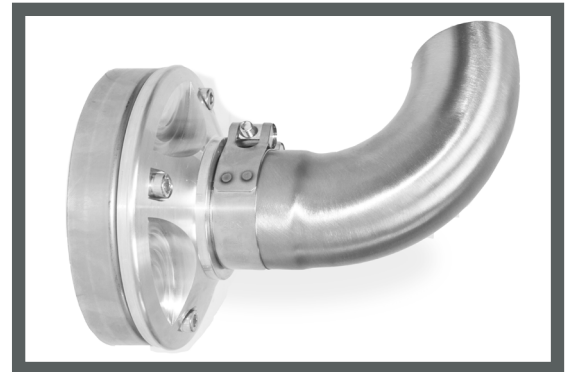


Figure 1

HMF Turn Down Installation

1. Remove the (4) **Allen Head Bolts** from the **Swamp End Cap** and remove the **End Cap**.
2. Slide the **Swamp Turn Down Adapter Tube** through the **End Cap** so the **flanged end** will butt up to the **Silencer**.
3. Replace the **End Cap** (with adapter tube) and (4) **Allen Head Bolts**.
4. Slide the **T-Bolt Clamp** over the **Turn Down** and slide the **Turn Down** over the **Adapter Tube**.
5. Tighten the **T-Bolt Clamp**.

Note: HMF will not be held responsible for damages caused by improper installation.



Swamp Turn Down

Recommended Jetting Specs: 45 pilot, 165 MSR Main

These settings are to be used as a starting point and were determined on our dyno at 900ft - 60°F.

The final tuning is up to the customer. For more information about tuning, visit www.HMFrac.com.

Warranty Information

All HMF exhaust systems are covered by a limited warranty described on the enclosed warranty card. Mapping/Jetting and installation are the responsibility of the customer. HMF Performance exhausts are designed for closed-course competition use only.

Having trouble? We can help.

If you're still having trouble with your installation, visit www.HMFrac.com and contact us by e-mail, Forums, or by calling 866.HMF.PIPE



This exhaust, EFI Controller, air filter, jet kit is not intended for use/sale in California and does not meet California, Federal, EPA, CARB noise or emission standards for on road/highway, public, private or state land and is prohibited for use by Federal law. This exhaust, EFI Controller, air filter, jet kit is intended for use in "closed course competition off road racing use only" on machines which do not fall under the California, Federal, EPA, CARB noise or emission standards. Modifications which exceed California, Federal, EPA, CARB noise or emission standards on non "Closed course competition off road racing use only" vehicles is prohibited by Federal law.

FOOTNOTE: 2006 and newer motorcycles with head/tail lights OEM from the manufacturer and every all terrain vehicle, even those intended for off road closed course competition use, are considered California, Federal, EPA CARB noise or emission controlled vehicles. Vehicle emission control information is noted in the owners manual and on the machine air box lid and exhaust muffler. Any modifications which exceed the California, Federal, EPA, and CARB noise or emission standard is prohibited by Federal LAW.