

Honda Rubicon 500

Installation: Slip On System



Please Read Carefully

Read all instructions before installation. Make sure the vehicle and exhaust system are completely cool & on level ground before installation. You should have some mechanical knowledge and a basic set of tools. (A lift, center or rear stand will help.) We advise that this installation be done by a qualified technician. If this is a street vehicle, you may need to modify or replace your stock license plate bracket and turn signals. Please consult your local dealer. Check your local laws to make sure you are in compliance. HMF is not responsible if you are not.

Stock Slip On Removal

1. Remove the **Side Cover**. (see Figure 1)
2. Remove the **Rivets**. (see Figure 2)
3. Remove the **(2) Engine Cover Bolts** and the **Cover**. (see Figure 3)
4. Remove the **Rivets** from the **Front Splash Shield**. The back side shows you need to pull **Up and Out** to remove the **Shield**. (see Figures 4 & 5)
5. Remove the **Silencer Heat Shield Clamps**. (see Figure 6)
6. Remove the **Clip**. (see Figure 7) Use a tie wrap to secure the **Silencer** away from the **Head Pipe**.
7. Remove the two **Cylinder-to-Head Pipe Bolts** (see Figure 8)
8. Remove the **Silencer-to-Subframe Bolt**. (see Figure 9)

HMF Slip On Installation

1. Slide the **T-Bolt Clamp** onto the **HMF Inlet**. (see Figure 10)
2. Using the supplied hardware, mount the **HMF Silencer** in the **Stock Location**.
3. Tighten the **Silencer** to the **Subframe Bolt**, then the **T-Bolt Clamp** last.
4. Re-install the **Tire** and **Plastic Parts**. Check all hardware at regular intervals.

The Foreman 500 FA model is LIQUID COOLED and comes with a VE6AE-A carb with a 158 main jet.

The Foreman 500 FM model is AIR COOLED and comes with a VE6DA-B carb with a 120 main jet. (according to online micro fiche information)

Baseline jetting for the 500FA LIQUID COOLED model is a 170 Keihin Round Main Jet.

Baseline jetting for the 500FM AIR COOLED model is a 135 Keihin round Main Jet.

The Jet Kits will include jets for both models. It will be up to you to select the proper jet for your model.

Failure to recalibrate A/F mixture by re-jetting can cause extremely high exhaust gas temperatures resulting in Exhaust and or engine damage.

Warranty Information

All HMF exhaust systems are covered by a limited warranty described on the enclosed warranty card. Mapping/Jetting and installation are the responsibility of the customer. HMF Performance exhausts are designed for closed-course competition use only.

Having trouble? We can help.

If you're still having trouble with your installation, visit www.HMFracing.com and contact us by e-mail, Forums, or by calling 866.HMF.PIPE



This exhaust, EFI Controller, air filter, jet kit is not intended for use/sale in California and does not meet California, Federal, EPA, CARB noise or emission standards for on road/highway, public, private or state land and is prohibited for use by Federal law. This exhaust, EFI Controller, air filter, jet kit is intended for use in "closed course competition off road racing use only" on machines which do not fall under the California, Federal, EPA, CARB noise or emission standards. Modifications which exceed California, Federal, EPA, CARB noise or emission standards on non "Closed course competition off road racing use only" vehicles is prohibited by Federal law.

FOOTNOTE: 2006 and newer motorcycles with head/tail lights OEM from the manufacturer and every all terrain vehicle, even those intended for off road closed course competition use, are considered California, Federal, EPA CARB noise or emission controlled vehicles. Vehicle emission control information is noted in the owners manual and on the machine air box lid and exhaust muffler. Any modifications which exceed the California, Federal, EPA, and CARB noise or emission standard is prohibited by Federal LAW.



Figure 1



Figure 2



Figure 3



Figure 4



Figure 5



Figure 6

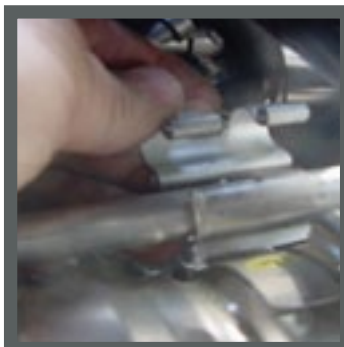


Figure 7



Figure 8



Figure 9



Figure 10



Figure 11



Figure 12



Figure 13

This exhaust, EFI Controller, air filter, jet kit is not intended for use/sale in California and does not meet California, Federal, EPA, CARB noise or emission standards for on road/highway, public, private or state land and is prohibited for use by Federal law. This exhaust, EFI Controller, air filter, jet kit is intended for use in "closed course competition off road racing use only" on machines which do not fall under the California, Federal, EPA, CARB noise or emission standards. Modifications which exceed California, Federal, EPA, CARB noise or emission standards on non "Closed course competition off road racing use only" vehicles is prohibited by Federal law. FOOTNOTE: 2006 and newer motorcycles with head/tail lights OEM from the manufacturer and every all terrain vehicle, even those intended for off road closed course competition use, are considered California, Federal, EPA CARB noise or emission controlled vehicles. Vehicle emission control information is noted in the owners manual and on the machine air box lid and exhaust muffler. Any modifications which exceed the California, Federal, EPA, and CARB noise or emission standard is prohibited by Federal LAW.